



from **\$1,074,000**

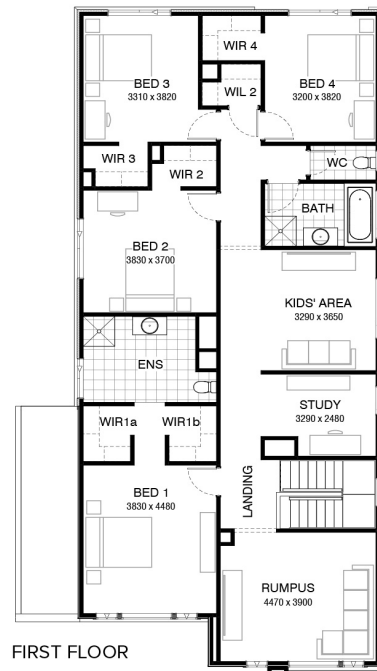
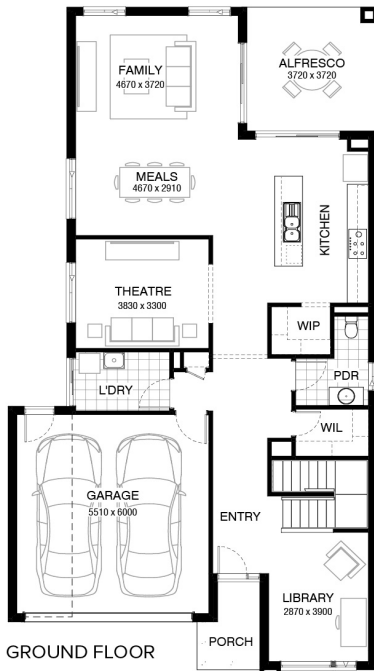
**ALMEDA 344**

Moorpark facade  
Home size : 36.73 SQ

4 3 2 400 sqm

**Lot 731 Colson Way, Berwick (Alira)**

- Site Costs Including Rock Assurance
- Council and Developer Requirements
- 12 Month Price Freeze With Option To Extend
- Quality Assured With Our 30-Year Structural Guarantee
- Multiple Floorplan Options Available
- Choice of Facade



**Deepak Jain**

0436 291 124

Deepak.Jain@burbank.com.au  
www.burbank.com.au



\*Images are for illustrative purposes only and may include upgrade items, fixtures, finishes available at an additional cost. Burbank does not supply items such as furniture, landscaping, fencing and external lighting. Any prices listed do not include the supply of these items. Packages are subject to availability and to the subject to developer's design review panel and council's final approval. Package price excludes stamp duty on land, legal fees and conveyancing costs. For detailed home pricing, please consult a Burbank sales consultant for further information. Burbank reserves the right to alter the images, descriptions, and/or pricing at any time without notice. All designs are the property of Burbank and must not be used, reproduced, copied or varied, wholly or in part without written permission from an authorised Burbank representative. Copyright. Burbank Australia Pty Ltd. ABN 91 007 099 872. Builders Registration number CDB-U-52603.